

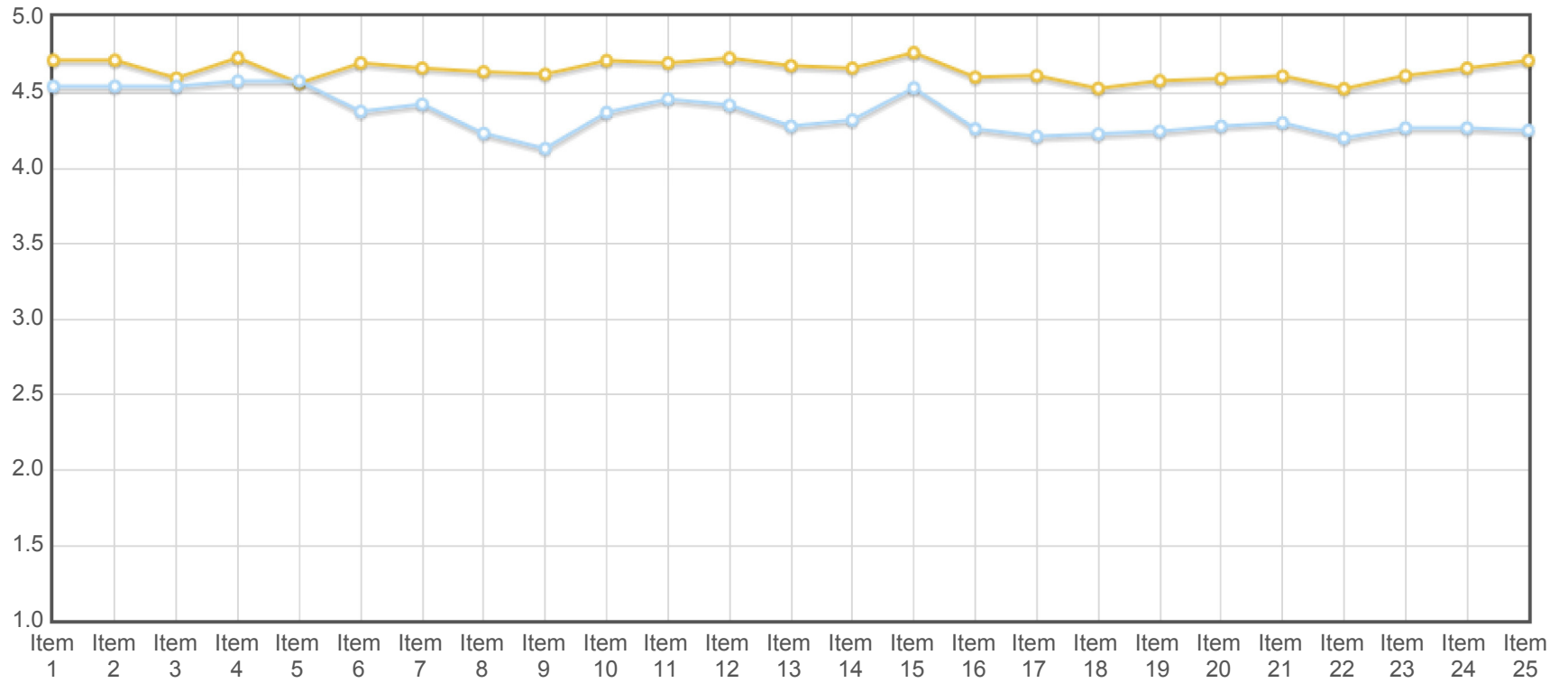
Student Evaluation of Faculty for 2013

Instructor Name: Barbara Blair

Statements Evaluated on Likert Scale of 1 to 5

Item 1	Provides students with a course syllabus that contains a clearly stated grading policy
Item 2	Provides students with a course syllabus that contains an attendance policy
Item 3	Clearly explains the goals and objectives of the class
Item 4	Demonstrates expertise of his/her subject
Item 5	Is prepared and organized
Item 6	As a rule, keeps the class schedule the entire semester
Item 7	Stay focused on the subject matter
Item 8	Is reasonably prompt in returning tests
Item 9	Is reasonably prompt in returning assignments
Item 10	Gives a sufficient number of tests and assignments to ensure a fair evaluation
Item 11	Gives adequate advance notice for major examinations
Item 12	Examinations and other graded work are based on material stressed on-line, in lecture or assigned readings
Item 13	Presents the material in a clear and understandable manner
Item 14	Speaks clearly and distinctly
Item 15	Organizes the content in a way that permits note-taking
Item 16	Relates classroom materials to the real world
Item 17	Exhibits a positive attitude toward learning and students by encouraging student participation
Item 18	Exhibits a positive attitude toward learning and students by encouraging student expression of ideas
Item 19	Exhibits a positive attitude toward learning and students by respecting student viewpoints
Item 20	Exhibits a positive attitude toward learning and students by willingly admits his/her errors
Item 21	Is usually available for during office hours, e-mail or telephone
Item 22	As a result of this instructor, my interest in the subject has increased
Item 23	I would recommend this course to another student
Item 24	I would take another class with this instructor
Item 25	I would recommend this instructor

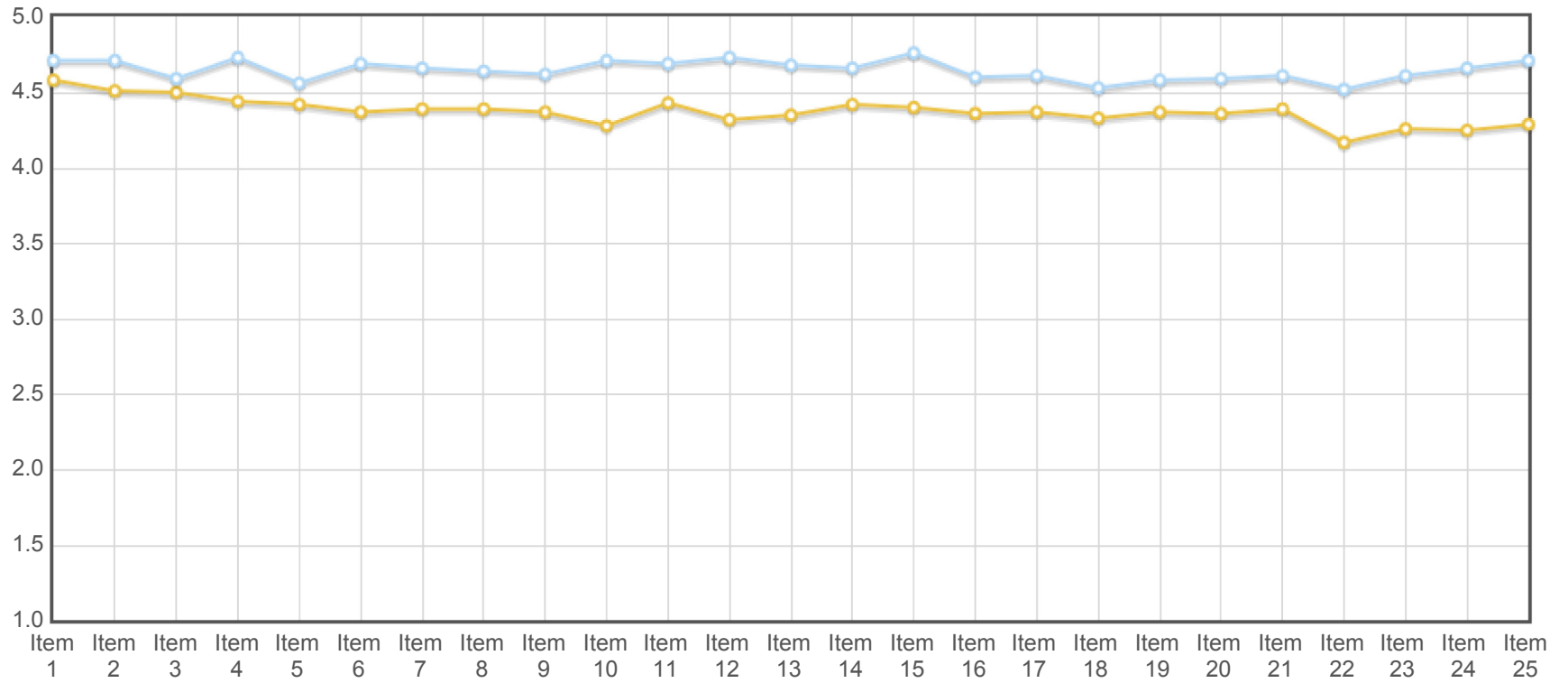
Course Selections - Barbara Blair - All Courses



Response Summary for Barbara Blair (Hover "Item" to see question or point to see value)

Courses	Item 1	Item 2	Item 3	Item 4	Item 5	Item 6	Item 7	Item 8	Item 9	Item 10	Item 11	Item 12	Item 13	Item 14	Item 15	Item 16	Item 17	Item 18	Item 19	Item 20	Item 21	Item 22	Item 23	Item 24	Item 25
HIST1301	4.71	4.71	4.59	4.73	4.56	4.69	4.66	4.64	4.62	4.71	4.69	4.73	4.68	4.66	4.76	4.6	4.61	4.53	4.58	4.59	4.61	4.52	4.61	4.66	4.71
HIST1302	4.54	4.54	4.54	4.57	4.57	4.37	4.42	4.23	4.13	4.37	4.46	4.42	4.28	4.32	4.53	4.26	4.21	4.23	4.24	4.28	4.3	4.2	4.27	4.27	4.25

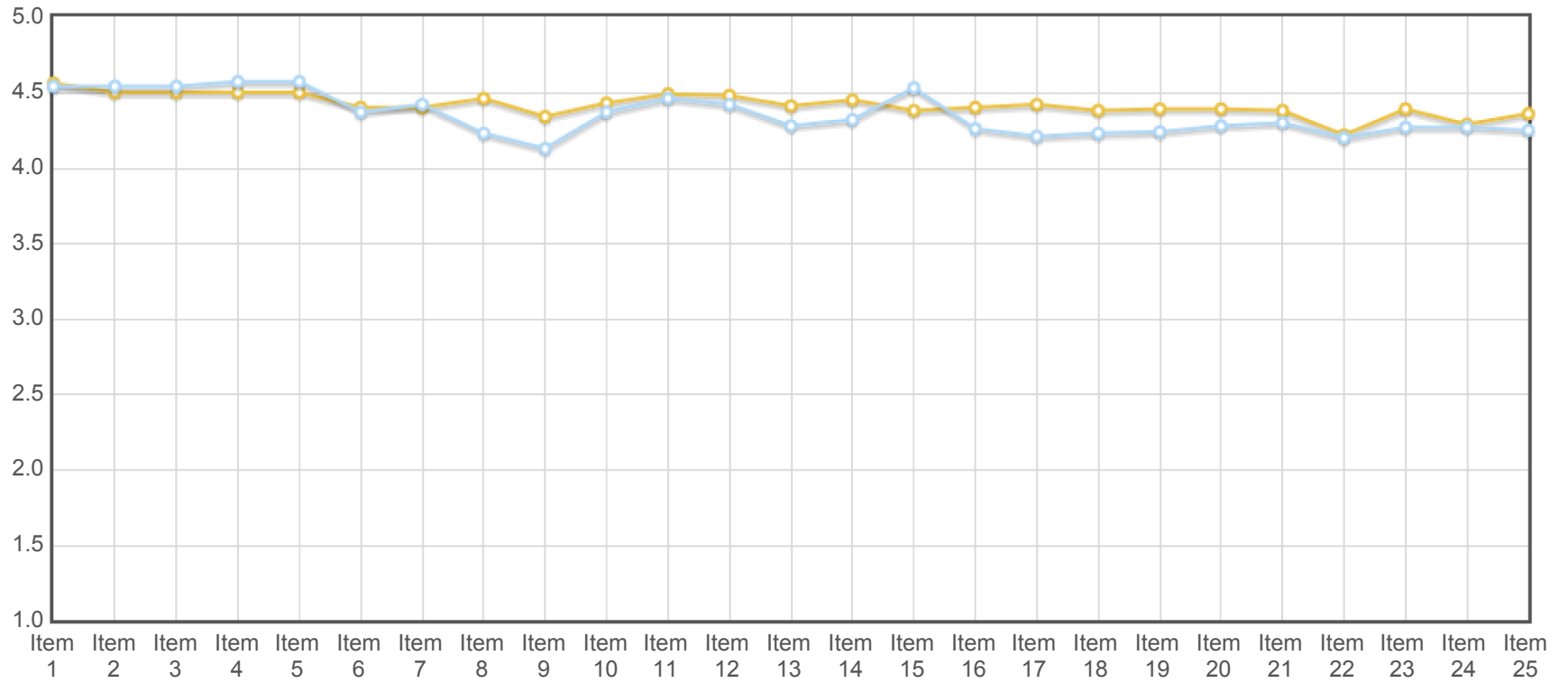
Course Selection - HIST1301 - Barbara Blair - College Comparison



Response Summary (Hover "Item" to see question or point to see value)

HIST1301	Item 1	Item 2	Item 3	Item 4	Item 5	Item 6	Item 7	Item 8	Item 9	Item 10	Item 11	Item 12	Item 13	Item 14	Item 15	Item 16	Item 17	Item 18	Item 19	Item 20	Item 21	Item 22	Item 23	Item 24	Item 25
SWTJC	4.58	4.51	4.5	4.44	4.42	4.37	4.39	4.39	4.37	4.28	4.43	4.32	4.35	4.42	4.4	4.36	4.37	4.33	4.37	4.36	4.39	4.17	4.26	4.25	4.29
Barbara Blair	4.71	4.71	4.59	4.73	4.56	4.69	4.66	4.64	4.62	4.71	4.69	4.73	4.68	4.66	4.76	4.6	4.61	4.53	4.58	4.59	4.61	4.52	4.61	4.66	4.71

Course Selection - HIST1302 - Barbara Blair - College Comparison



Response Summary (Hover "Item" to see question or point to see value)

HIST1302	Item 1	Item 2	Item 3	Item 4	Item 5	Item 6	Item 7	Item 8	Item 9	Item 10	Item 11	Item 12	Item 13	Item 14	Item 15	Item 16	Item 17	Item 18	Item 19	Item 20	Item 21	Item 22	Item 23	Item 24	Item 25
<div style="display: flex; align-items: center;"> <div style="width: 15px; height: 15px; background-color: #FFC000; margin-right: 5px;"></div> SWTJC </div>	4.56	4.5	4.5	4.5	4.5	4.4	4.4	4.46	4.34	4.43	4.49	4.48	4.41	4.45	4.38	4.4	4.42	4.38	4.39	4.39	4.38	4.22	4.39	4.29	4.36
<div style="display: flex; align-items: center;"> <div style="width: 15px; height: 15px; background-color: #ADD8E6; margin-right: 5px;"></div> Barbara Blair </div>	4.54	4.54	4.54	4.57	4.57	4.37	4.42	4.23	4.13	4.37	4.46	4.42	4.28	4.32	4.53	4.26	4.21	4.23	4.24	4.28	4.3	4.2	4.27	4.27	4.25